

## Poly-Check® Seal

The Poly-Check is an economical fixed length plastic flagged strap trailer seal for use on a wide range of applications.

### Product rating

- A - Stock item generically marked
- B - Locally marked in house.
- C - Factory manufactured and marked
- D - Price and delivery on application (long lead item)

### Applications:

- |                       |                       |
|-----------------------|-----------------------|
| Railroad cars         | Cabinet/doors/hatches |
| Trucks & trailers     | Gates and fire doors  |
| Intermodal containers | Side curtains & tilts |
| Tote boxes            | In-bond shipments     |

### Features:

- One piece seals for maximum security and proper sealing engagement.
- Plastic seal blushes if tampered with.
- Positive snap lock design with protruding locking points, verify locked position.
- Optional break points of easy, authorised removal.

### Materials:

Polypropylene. (Nylon also available in the 5" length only)

### Dimensions:

Available in three strap lengths : 5" (127mm) 7" (178mm), 10" (255mm)

**5" (127mm) Poly-Check** - Overall length: 6.9" (176mm) x .285 (7mm)  
Flag: 2" (50mm) x .750" (19mm)  
Tail : 5.2" (131mm) x .285" (7mm)

**7" (178mm) Poly-Check** - Overall length: 8.5" (216mm) x .285 (7mm)  
Flag: 2" (50mm) x .750" (19mm)  
Tail : 6.8" (172mm) x .285" (7mm)

**10" (255mm) Poly-Check** - Overall length: 11.5" (279mm) x .285 (7mm)  
Flag: 2" (50mm) x .750" (19mm)  
Tail : 6.8" (172mm) x .285" (7mm)

### Strength:

Average pull apart force, Polypropylene is 83lbs (37kg) for Nylon 164lbs (74kg)

### Decoration/Printing:

- Heat stamped serial number (7 digits).
- Bar coded vinyl labels (Interleaved 2 of 5, Code 39 or 128).

### Colours:

- Stock colours - Red/ Blue / Green / Yellow
- Other colours are available on application (C item)

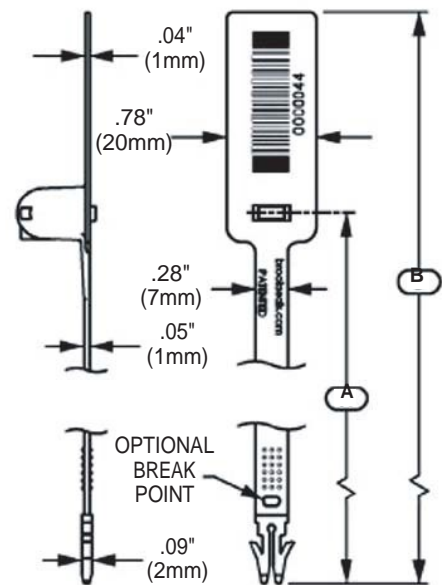
### Product numbers

- 6732105.X 5" (127mm)
  - 6732175.X 7" (178mm)
  - 6232110 -X 10" (255mm)
- Note: X denotes colour selection.

### Packaging

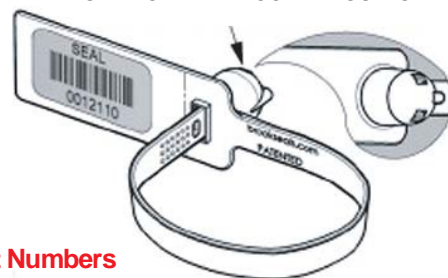
7" standard packaging: 10 matts - 100/bag x, 2.5K/carton  
Carton dims: 18" x 17" x 12" (460mm x 435mm x 310mm)  
Carton weight : Gross 20lbs (9kg) Net : 18lbs (8kg)

10" standard packaging: 10 matts - 100/bag x, 2.5K/carton  
Carton dims: 28" x 14.5" x 12" (700mm x 360mm x 310mm)  
Carton weight: Gross 23lbs (10.5kg) Net : 20lbs (9kg)



Nominal Size	A = Strap Length	B = Overall Length
5" (127mm)	5.2" (131mm)	6.9" (176mm)
7" (178mm)	6.8" (172mm)	8.5" (216mm)
10" (254mm)	9.8" (248mm)	11.5" (292mm)

### LOCKING POINTS PROTRUDE FROM DOME TO VERIFY LOCKED POSITION



### Patent Numbers

- US5,441,316; 5,533,767
- Mexico 943591
- Canada 2,201,488
- S. Africa 95/2266
- Brazil PI 9510053.9
- Europe 0708954

Tyden Brammall of Scandinavia

CARGO SECURITY EXPERTS

Stolpegårdsvej 7

DK 2820 Gentofte

+45 39 68 26 34 / +45 24 21 34 40

[www.tyden.dk](http://www.tyden.dk) / [www.fragtsikkerhedsekspernten.dk](http://www.fragtsikkerhedsekspernten.dk) / [www.forsegling.eu](http://www.forsegling.eu)

"Når de ikke kan brydes, kan der ikke snydes"